
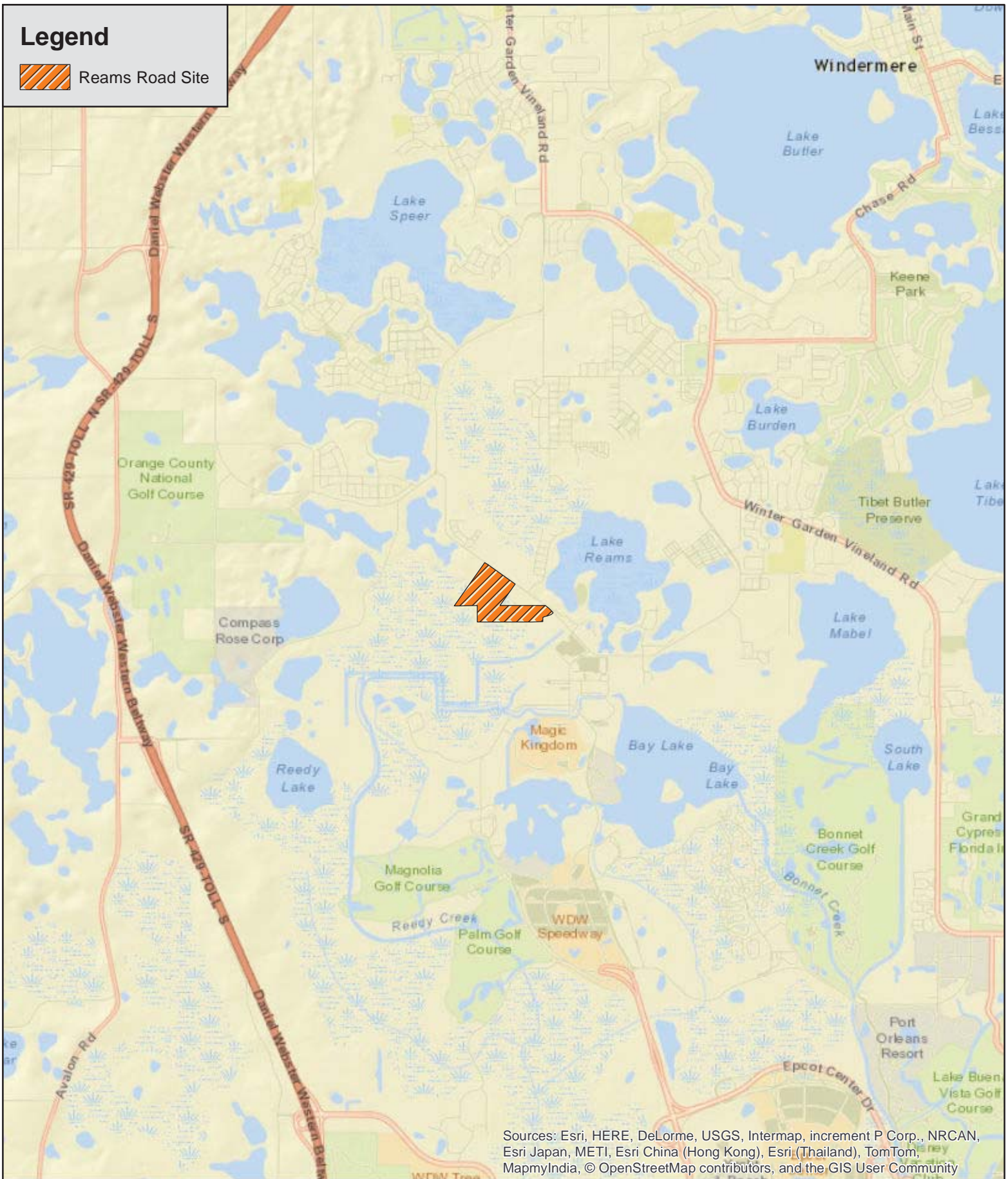


# Legend

 Reams Road Site



Sources: Esri, HERE, DeLorme, USGS, Intermap, increment P Corp., NRCAN, Esri Japan, METI, Esri China (Hong Kong), Esri (Thailand), TomTom, MapmyIndia, © OpenStreetMap contributors, and the GIS User Community

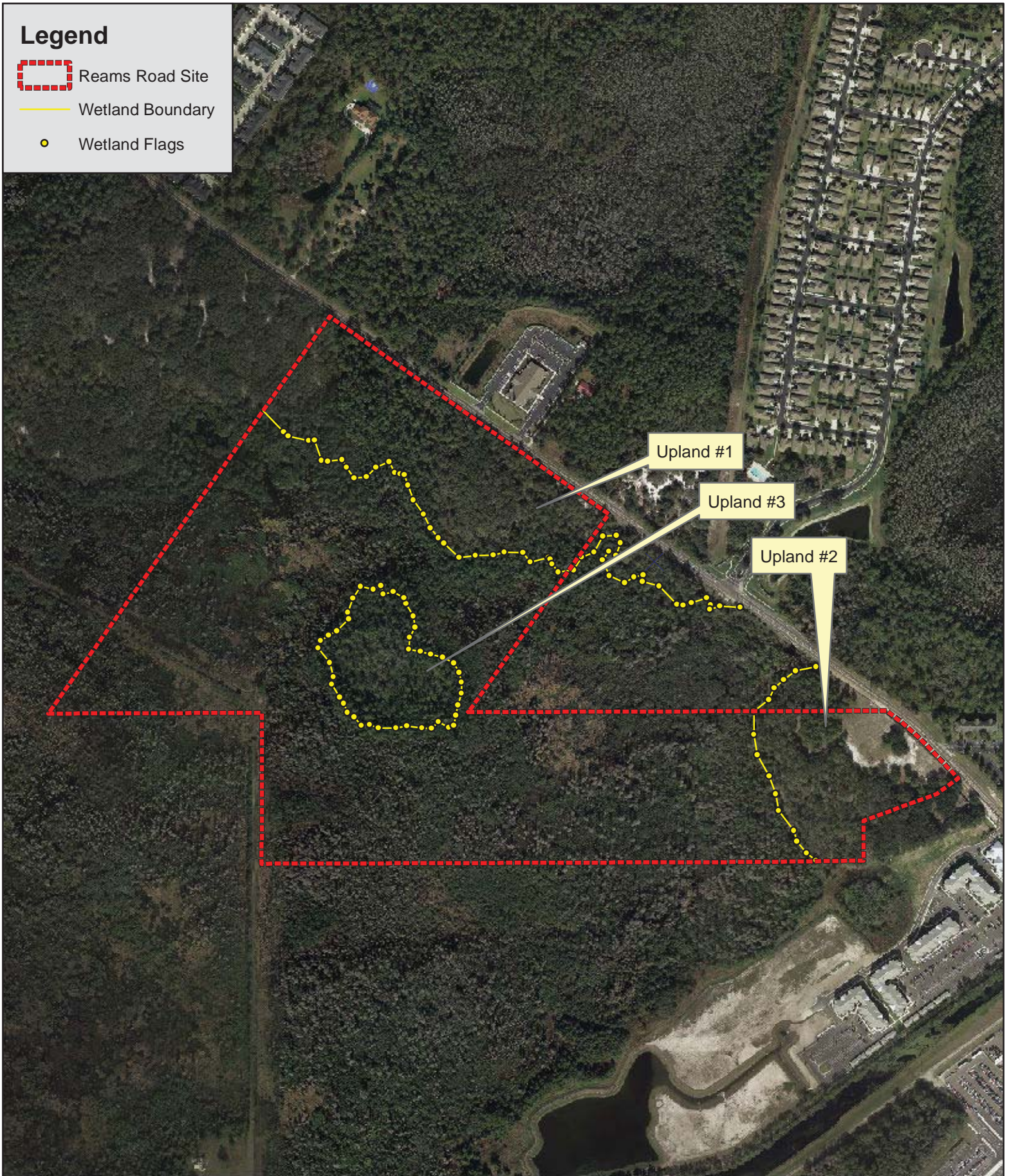
Reams Road Site  
Orange County, Florida  
Figure 1  
Location Map



0 0.5 1 Miles  
Project #: 125-103  
Produced By: JMB  
Date: 8/5/2015

# Legend

-  Reams Road Site
-  Wetland Boundary
-  Wetland Flags




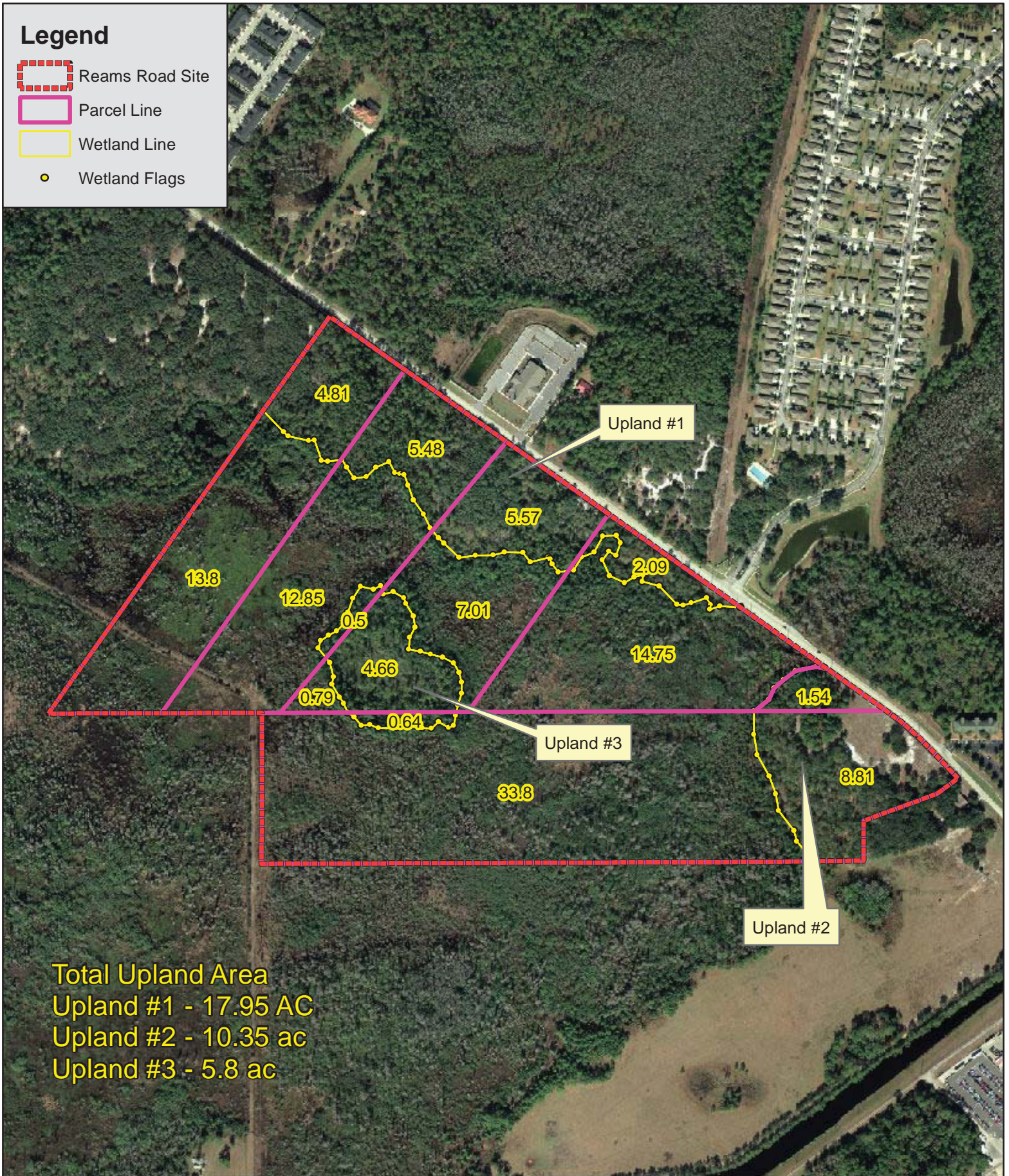
Reams Road Site  
Orange County, Florida  
Figure 5  
FLUCFCS Map



0 300 600 Feet  
Project #: 125-103  
Produced By: JMB  
Date: 8/5/2015

**Legend**

-  Reams Road Site
-  Parcel Line
-  Wetland Line
-  Wetland Flags



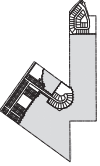
Total Upland Area  
 Upland #1 - 17.95 AC  
 Upland #2 - 10.35 ac  
 Upland #3 - 5.8 ac

Reams Road Site  
 Orange County, Florida  
 Figure 6(A)  
 Wetland Delineation Map

0 300 600 Feet

Project #: 125-103  
 Produced By: DPH  
 Date: 11/18/2014





**LEGEND**

- PRIMARY WETLAND IMPACT AREA
- SECONDARY WETLAND IMPACT AREA / UPLAND BUFFER
- UPLAND BUFFER
- CONSERVATION AREA

- NOTES**
1. CONSERVATION AREA: THIS PROPERTY IS DESIGNATED AS A CONSERVATION AREA OF STATE SIGNIFICANCE UNDER ARTICLE X, SECTION 6, OF THE FLORIDA CONSTITUTION. THE PROPERTY IS TO BE MAINTAINED AS A CONSERVATION AREA OF STATE SIGNIFICANCE.
  2. UPLAND BUFFER: THE UPLAND BUFFER IS REQUIRED TO PROTECT THE WETLANDS FROM ADVERSE IMPACTS OF DEVELOPMENT. THE BUFFER SHALL BE MAINTAINED AS OPEN SPACE.
  3. WETLANDS: WETLANDS ARE AREAS THAT SUPPORT OR ARE CAPABLE OF SUPPORTING WETLAND VEGETATION.

**WETLANDS PER ORANGE COUNTY CAD**

WETLAND CLASS	AREA (AC)
W1 - COB (14-12-2009)	69.34
TOTAL	69.34

**WETLAND CONSERVATION TRACTS**

TRACT NO.	WETLAND CLASS	AREA (AC)	PERCENTAGE
W-1	W1 - COB	55.51	78.62%
W-2	W1 - COB	4.85	7.00%
TOTAL		60.36	87.20%

**PROPOSED WETLAND IMPACTS (SEE NOTE 1 IN THIS SHEET)**

IMPACT NO.	WETLAND CLASS	AREA (AC)
PRIMARY IMPACT 1	W1 - COB	0.02
PRIMARY IMPACT 2	W1 - COB	0.02
PRIMARY IMPACT 3	W1 - COB	0.02
PRIMARY IMPACT 4	W1 - COB	0.02
PRIMARY IMPACT 5	W1 - COB	0.02
PRIMARY IMPACT 6	W1 - COB	0.02
PRIMARY IMPACT 7	W1 - COB	0.02
PRIMARY IMPACT 8	W1 - COB	0.02
PRIMARY IMPACT 9	W1 - COB	0.02
PRIMARY IMPACT 10	W1 - COB	0.02
PRIMARY IMPACT 11	W1 - COB	0.02
PRIMARY IMPACT 12	W1 - COB	0.02
SECONDARY IMPACT 1	W1 - COB	0.02
SECONDARY IMPACT 2	W1 - COB	0.02
SECONDARY IMPACT 3	W1 - COB	0.02
SECONDARY IMPACT 4	W1 - COB	0.02
SECONDARY IMPACT 5	W1 - COB	0.02
SECONDARY IMPACT 6	W1 - COB	0.02
SECONDARY IMPACT 7	W1 - COB	0.02
SECONDARY IMPACT 8	W1 - COB	0.02
SECONDARY IMPACT 9	W1 - COB	0.02
SECONDARY IMPACT 10	W1 - COB	0.02
SECONDARY IMPACT 11	W1 - COB	0.02
SECONDARY IMPACT 12	W1 - COB	0.02
TOTAL		0.24

**RAW WETLAND BALANCE SUMMARY**

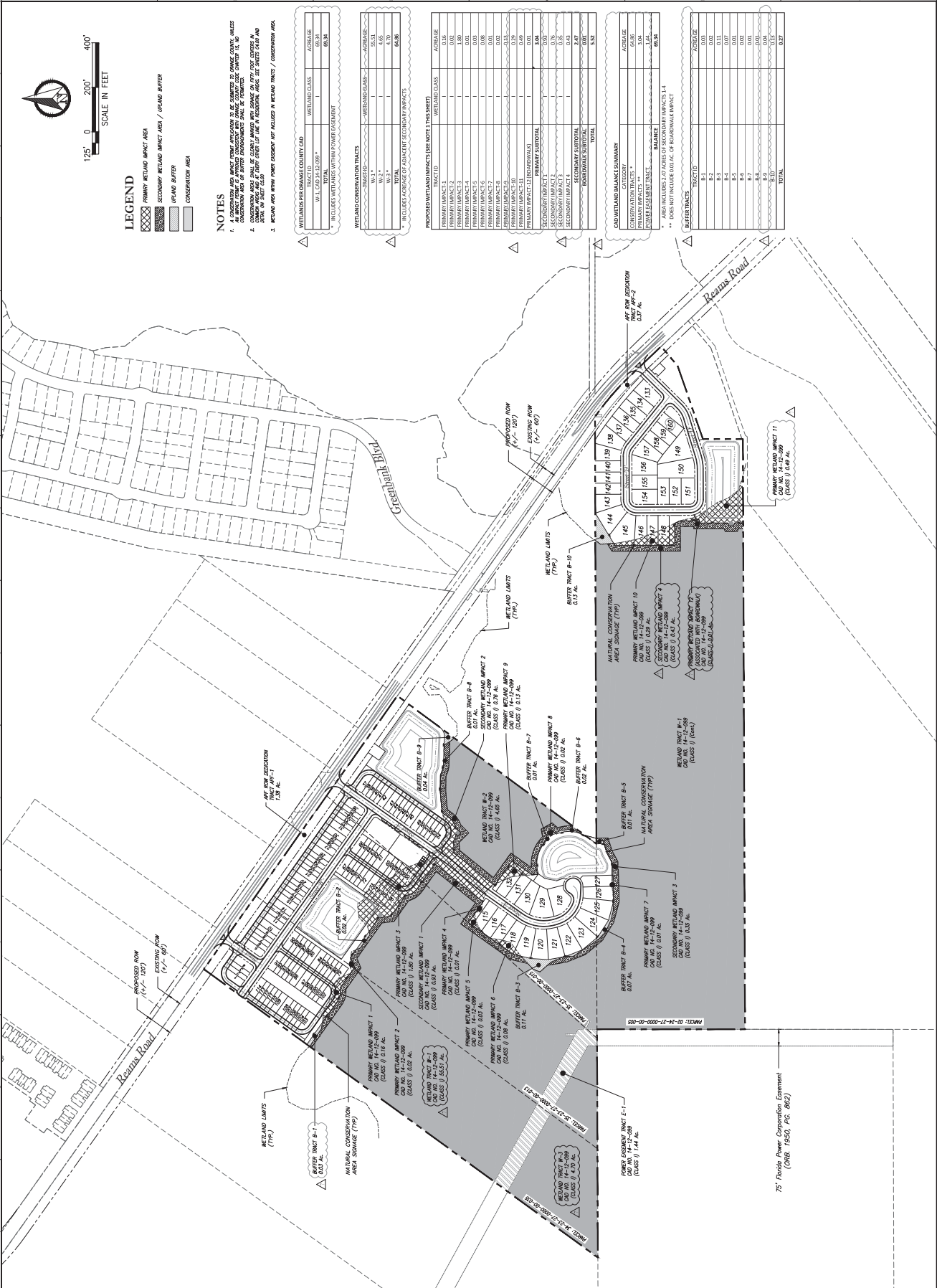
CATEGORY	AREA (AC)
WETLANDS	69.34
CONSERVATION TRACTS	60.36
PROPOSED WETLAND IMPACTS	0.24
TOTAL	129.46

**NET WETLAND BALANCE SUMMARY**

CATEGORY	AREA (AC)
WETLANDS	69.34
CONSERVATION TRACTS	60.36
PROPOSED WETLAND IMPACTS	0.24
TOTAL	129.46

**BUFFER TRACTS - TRACT LOG**

TRACT NO.	AREA (AC)	CLASS
B-1	0.01	UB
B-2	0.01	UB
B-3	0.01	UB
B-4	0.01	UB
B-5	0.01	UB
B-6	0.01	UB
B-7	0.01	UB
B-8	0.01	UB
B-9	0.01	UB
B-10	0.01	UB
TOTAL	0.09	



PROJECT Name: REAMS ROAD PROPERTY PSP-15-10-300

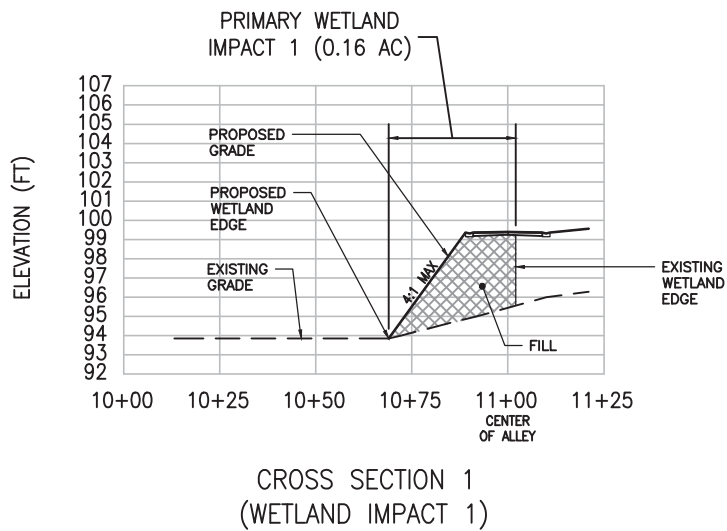
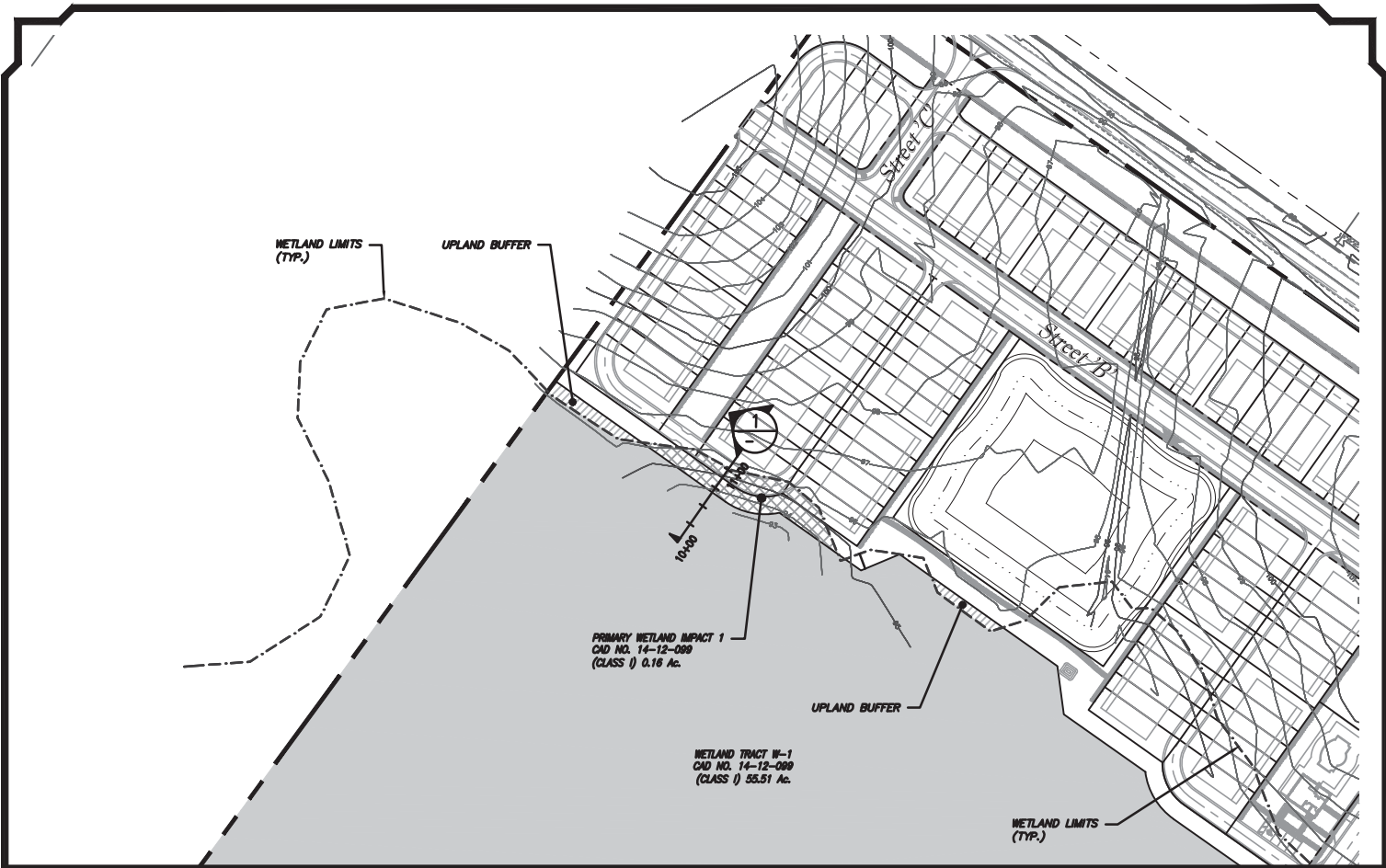
Submittal Title: ORANGE COUNTY, FL

Sheet Title: WETLAND CONSERVATION

Sheet No: C6.00

Date: NOVEMBER 18, 2015

POULOS & BENNETT  
Poulos & Bennett, LLC  
2940 E. Livingston Street, Orlando, FL 32803  
Tel: 407.226.5000  
Fax: 407.226.5001  
Psp. 15-10-300



Wetland Impact 1 Exhibit

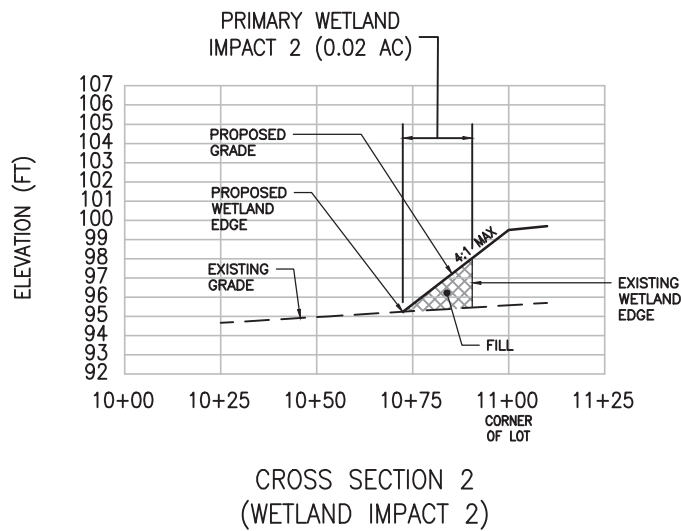
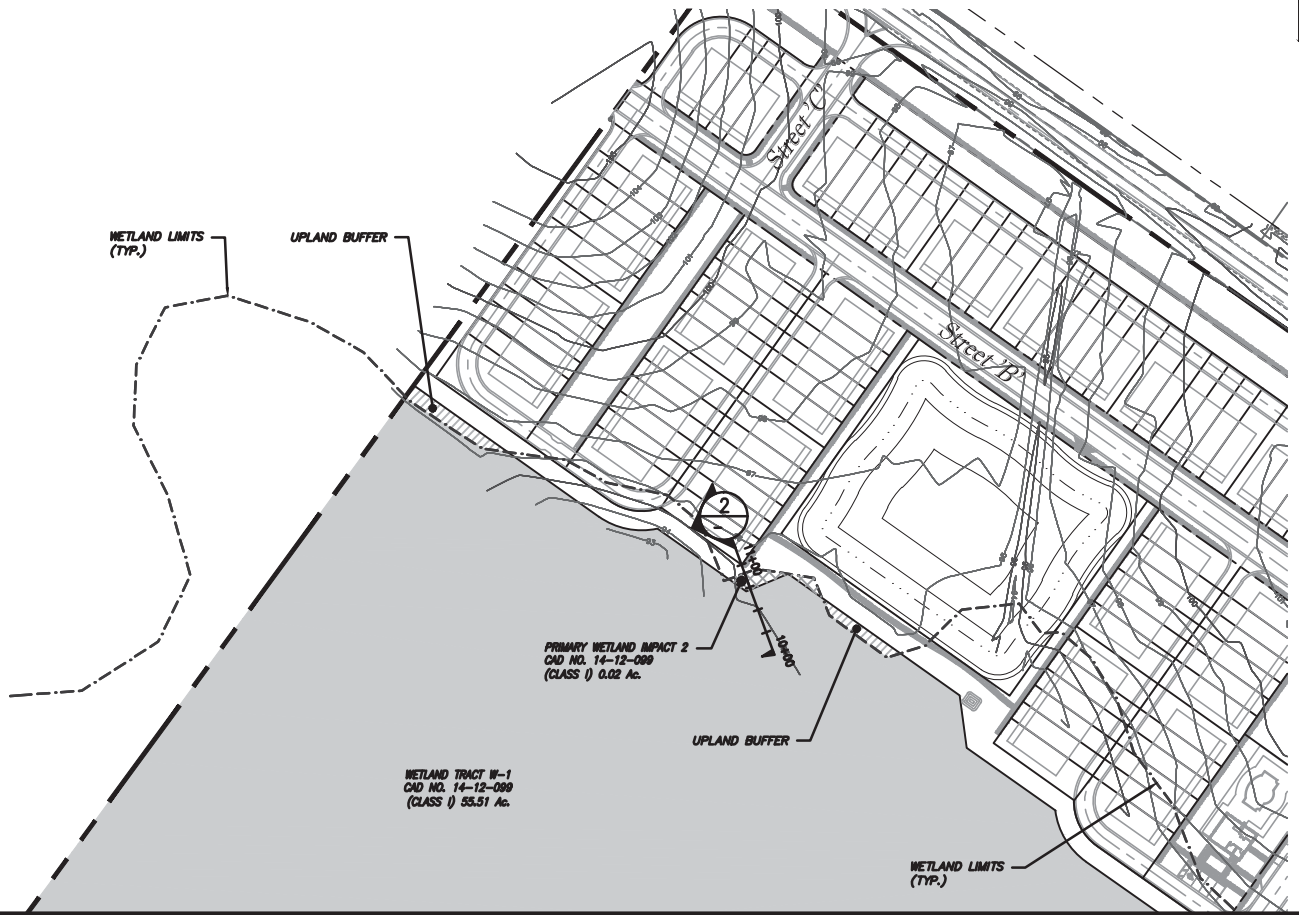
**Legado**

**POULOS & BENNETT**



SCALE IN FEET

Exhibit 1



Wetland Impact 2 Exhibit

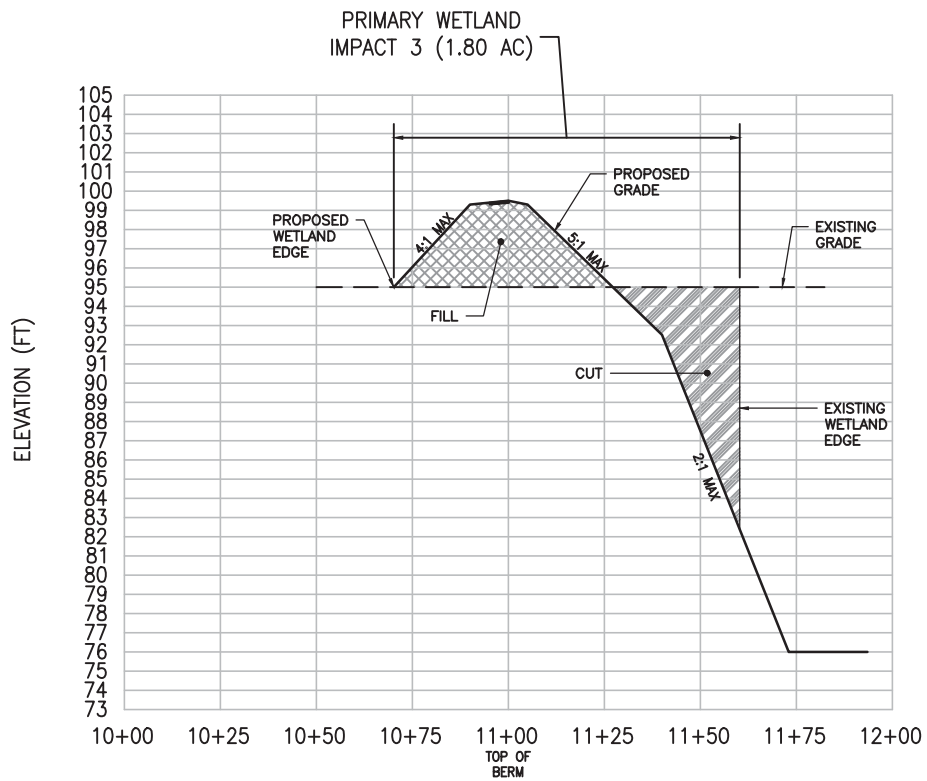
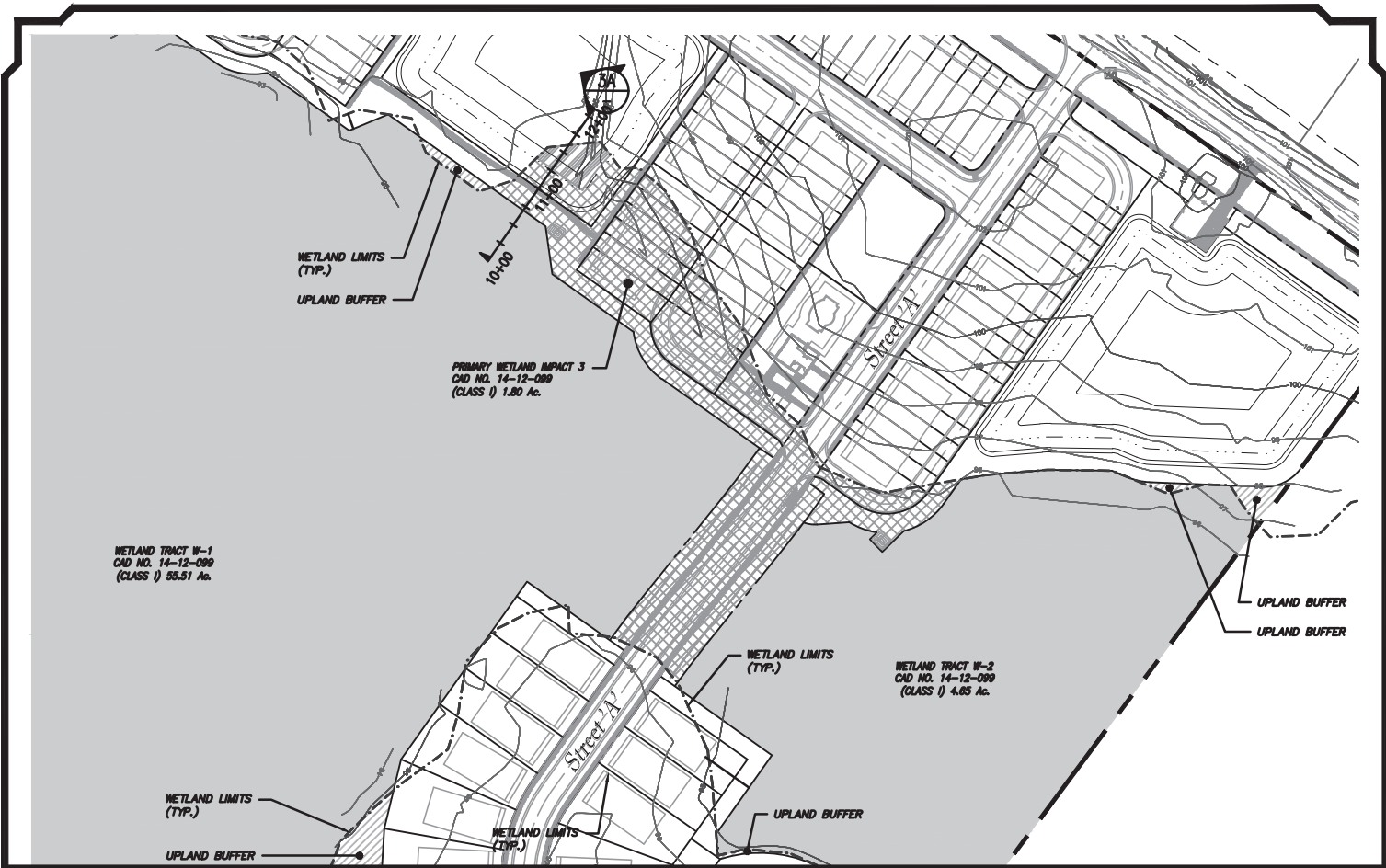
**Legado**

**POULOS & BENNETT**



SCALE IN FEET

Exhibit 2

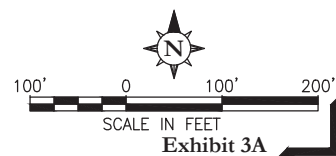


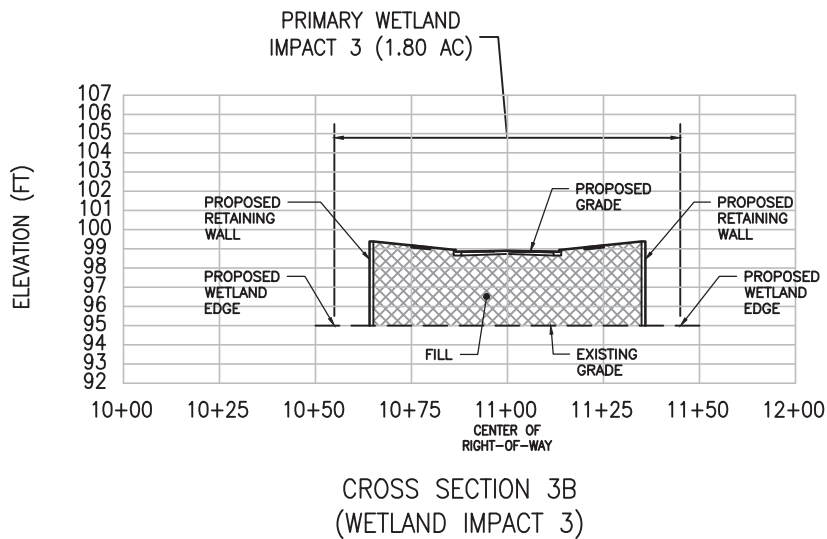
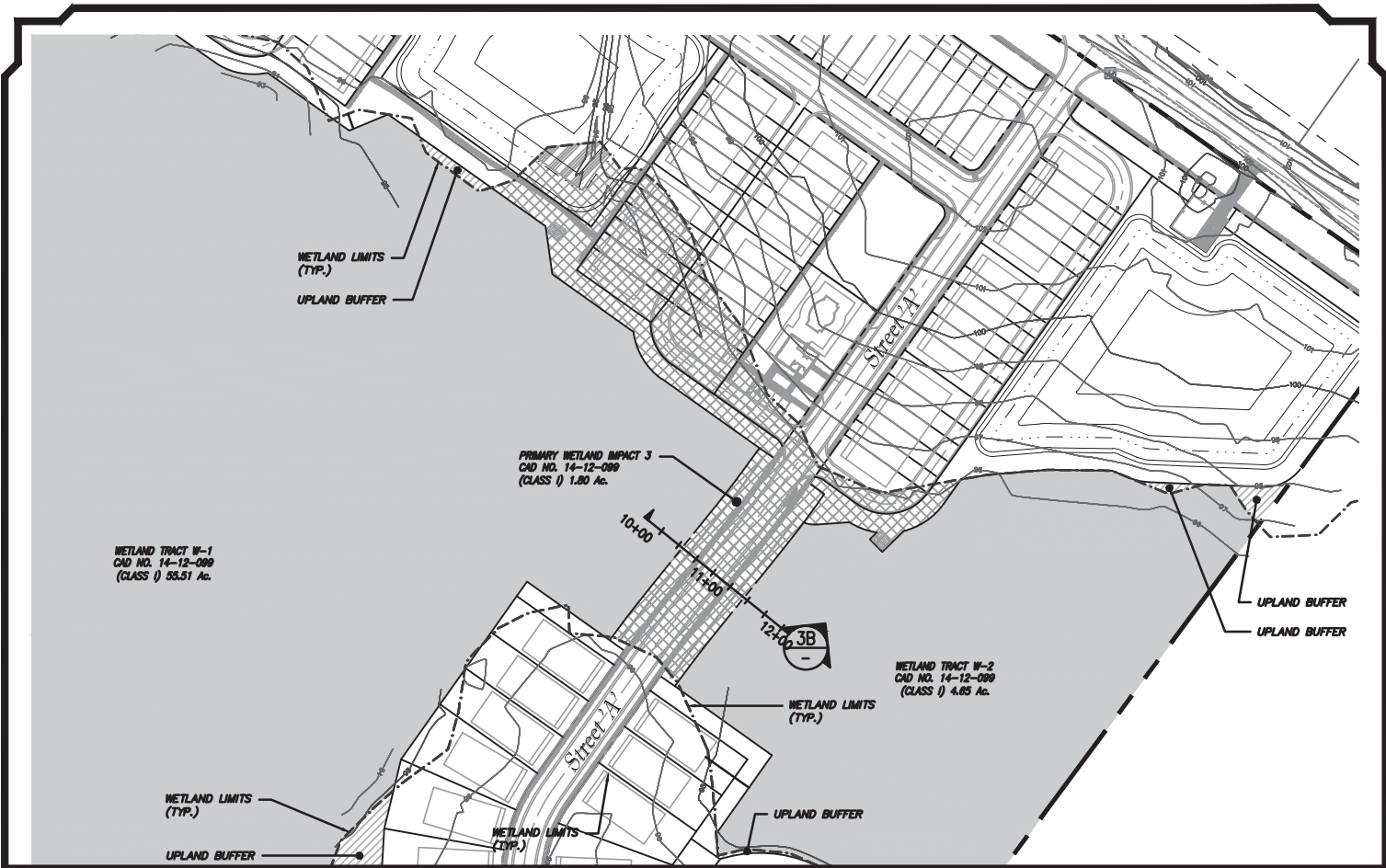
CROSS SECTION 3A  
(WETLAND IMPACT 3)

Wetland Impact 3A Exhibit

**Legado**

**POULOS & BENNETT**





Wetland Impact 3B Exhibit

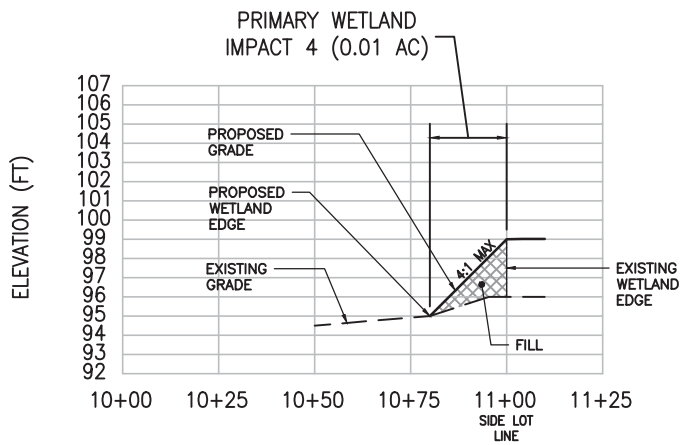
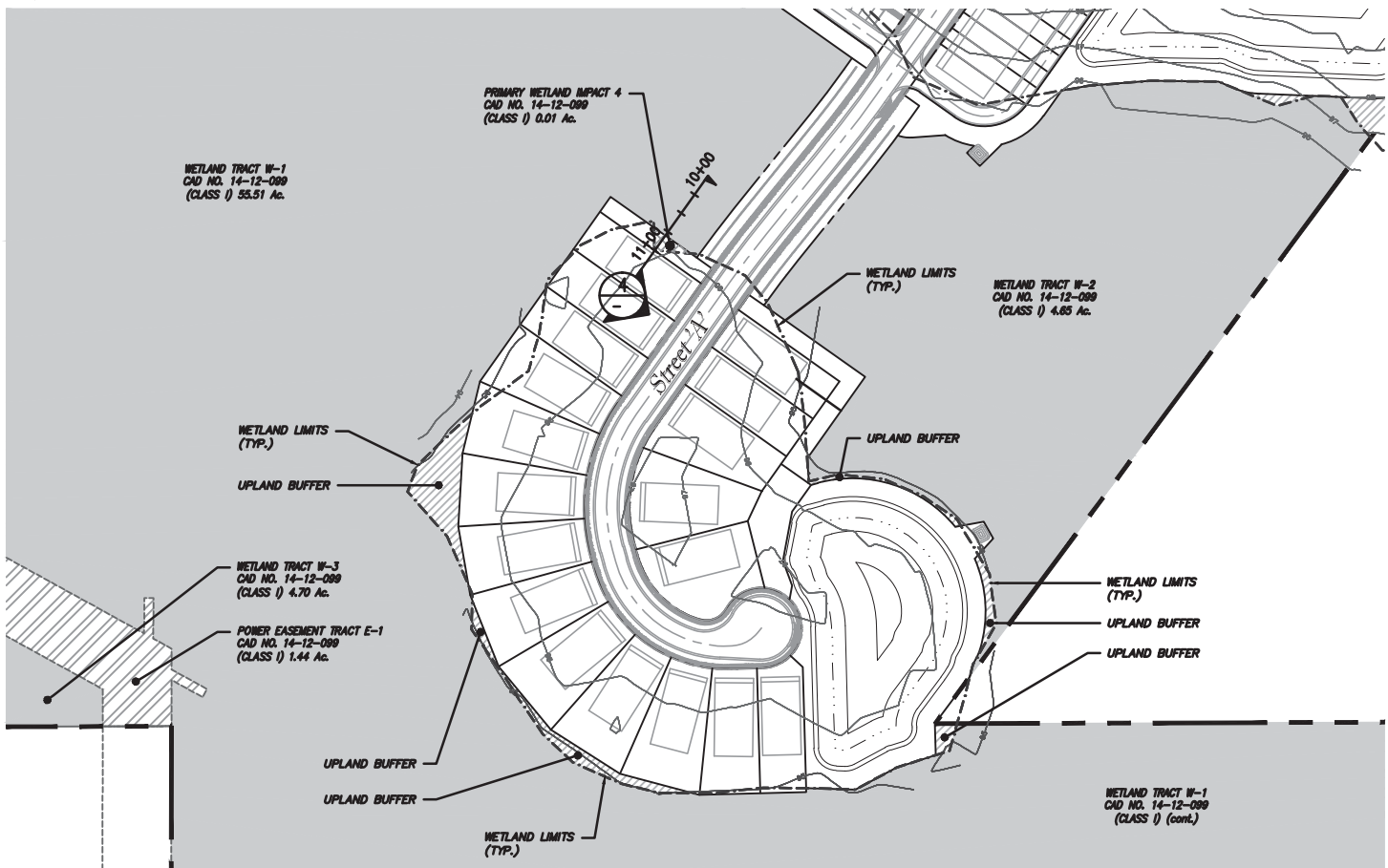
**Legado**

**POULOS & BENNETT**



SCALE IN FEET  
**Exhibit 3B**





CROSS SECTION 4  
(WETLAND IMPACT 4)

Wetland Impact 4 Exhibit

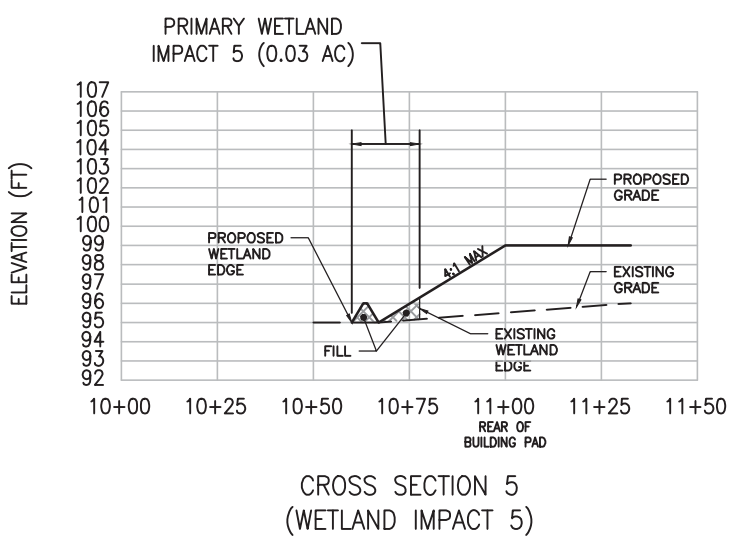
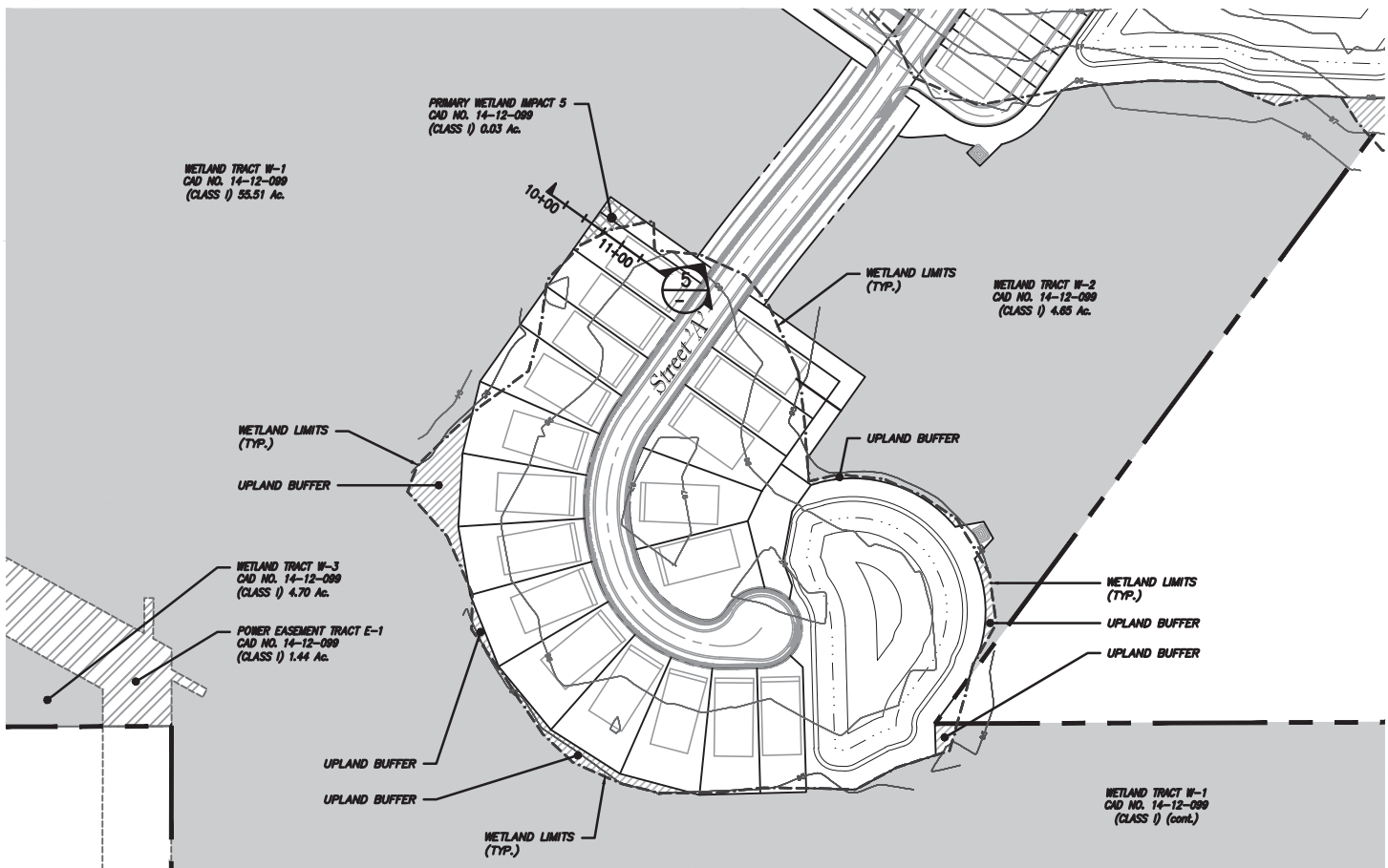
**Legado**

**POULOS & BENNETT**



SCALE IN FEET

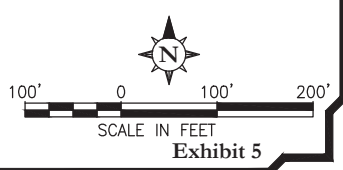
Exhibit 4



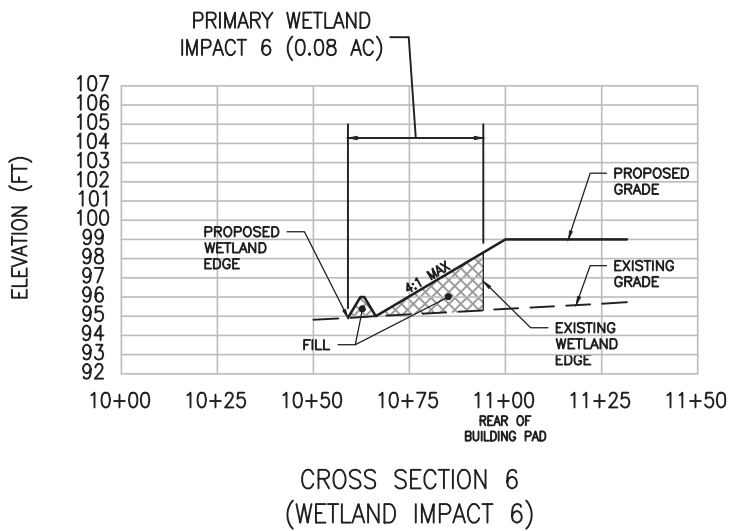
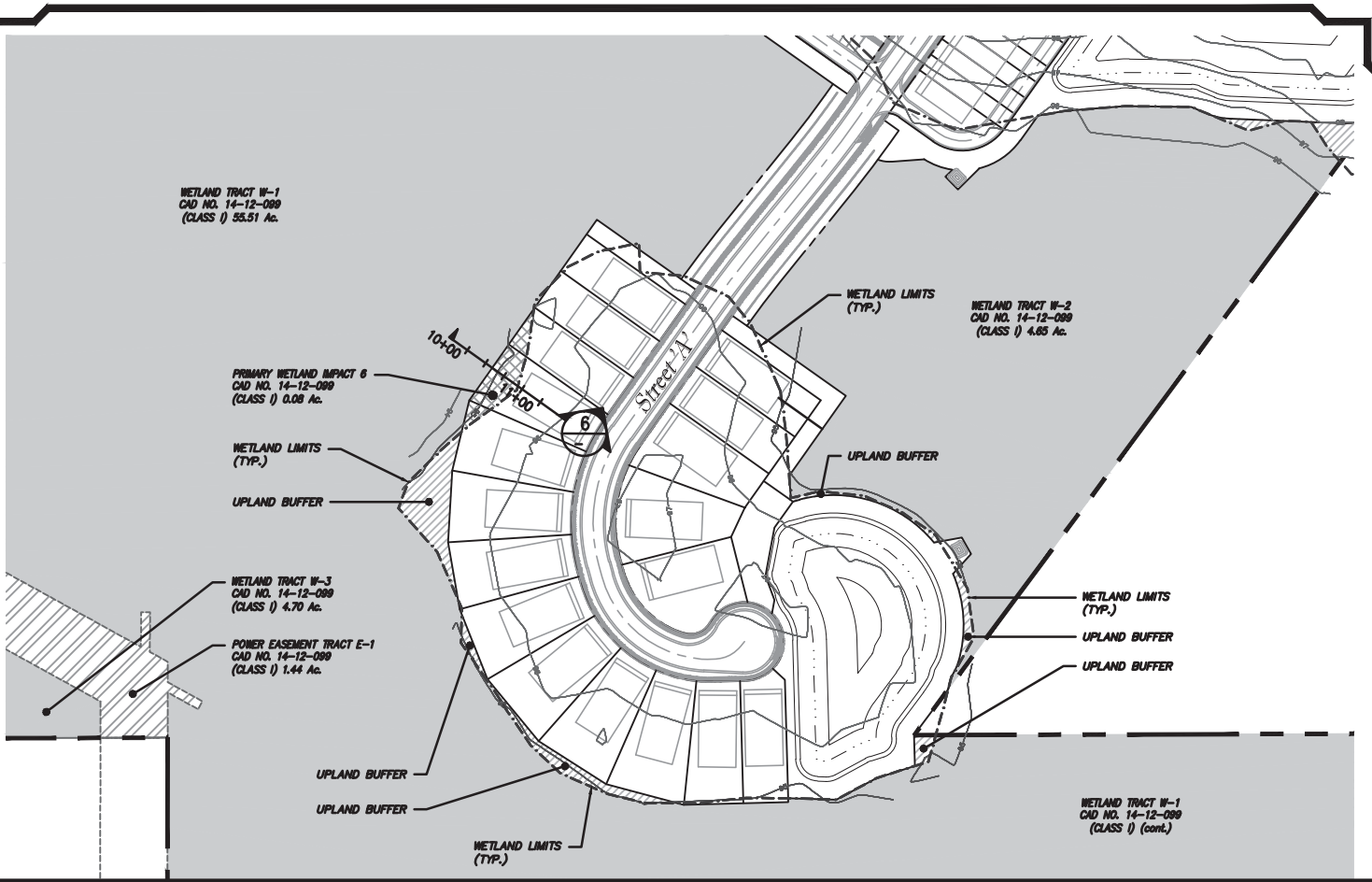
Wetland Impact 5 Exhibit

**Legado**

**POULOS & BENNETT**



Z:\2014\14-076 MATIANY - REAMS ROAD\CAD\EXH & FIGS\ACOE EXHIBIT\14-076 ACOE EXHIBIT



Wetland Impact 6 Exhibit

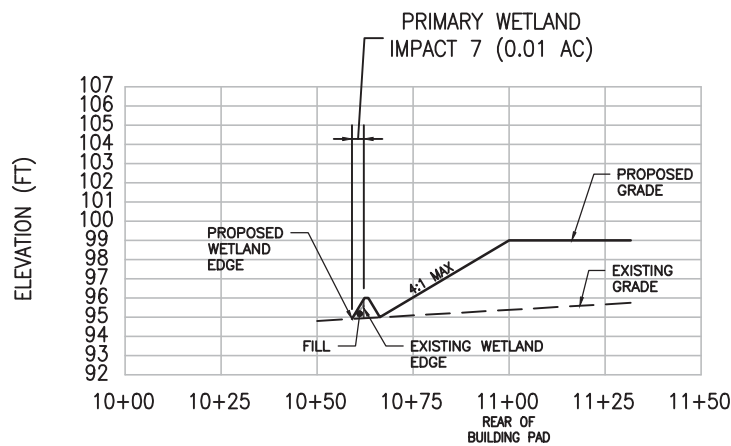
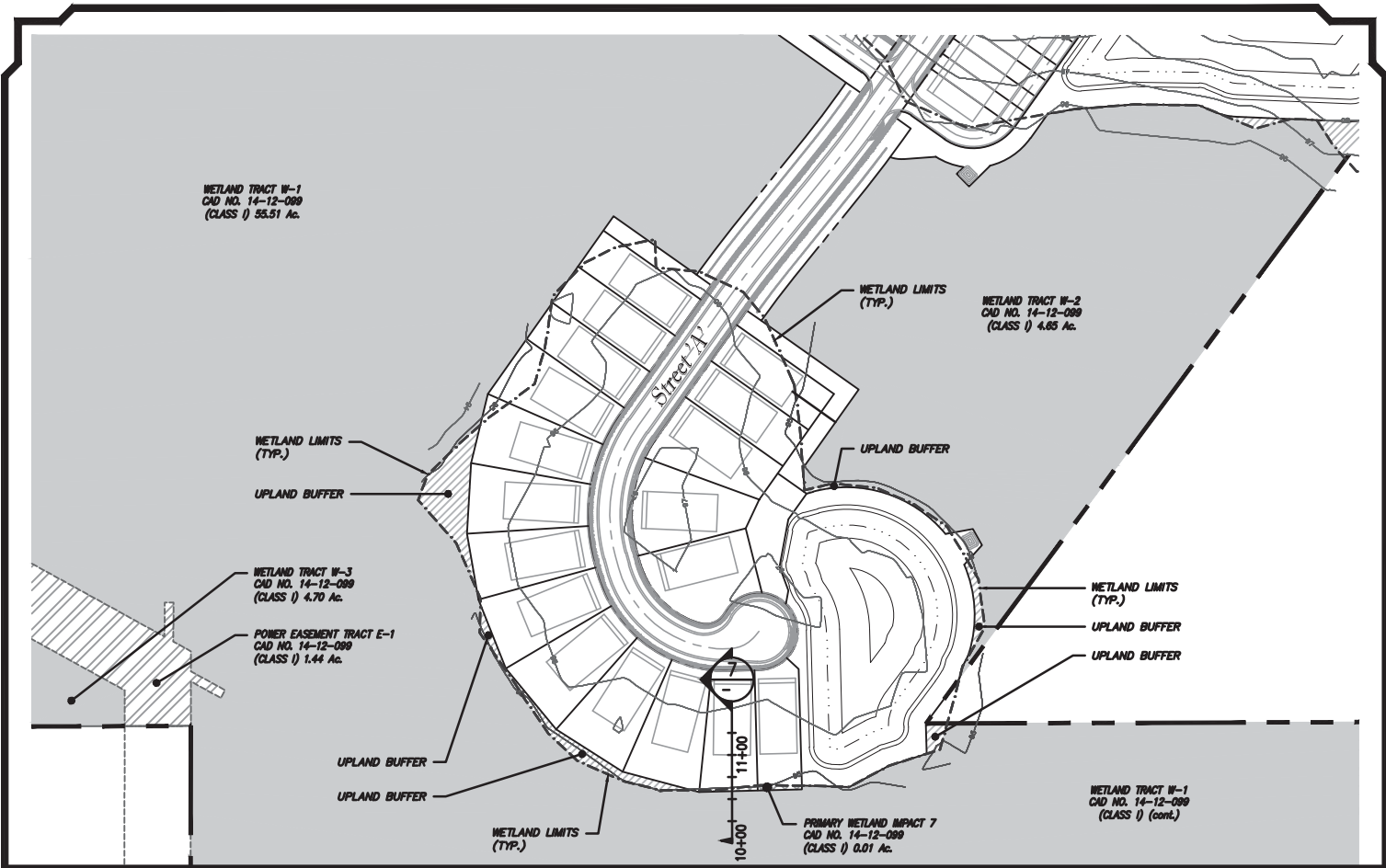
**Legado**

**POULOS & BENNETT**



SCALE IN FEET

Exhibit 6



CROSS SECTION 7  
(WETLAND IMPACT 7)

Wetland Impact 7 Exhibit

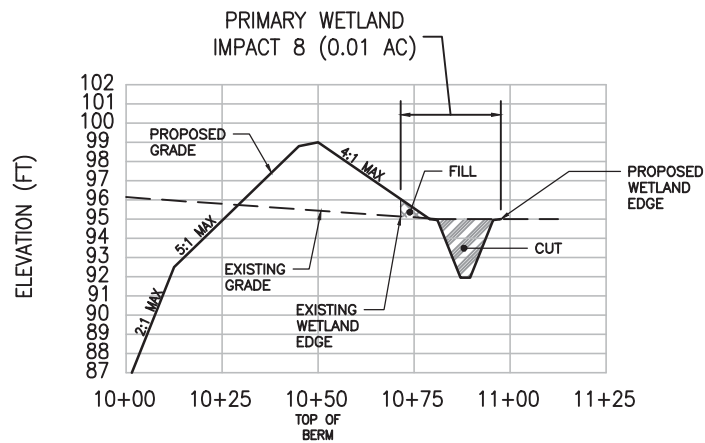
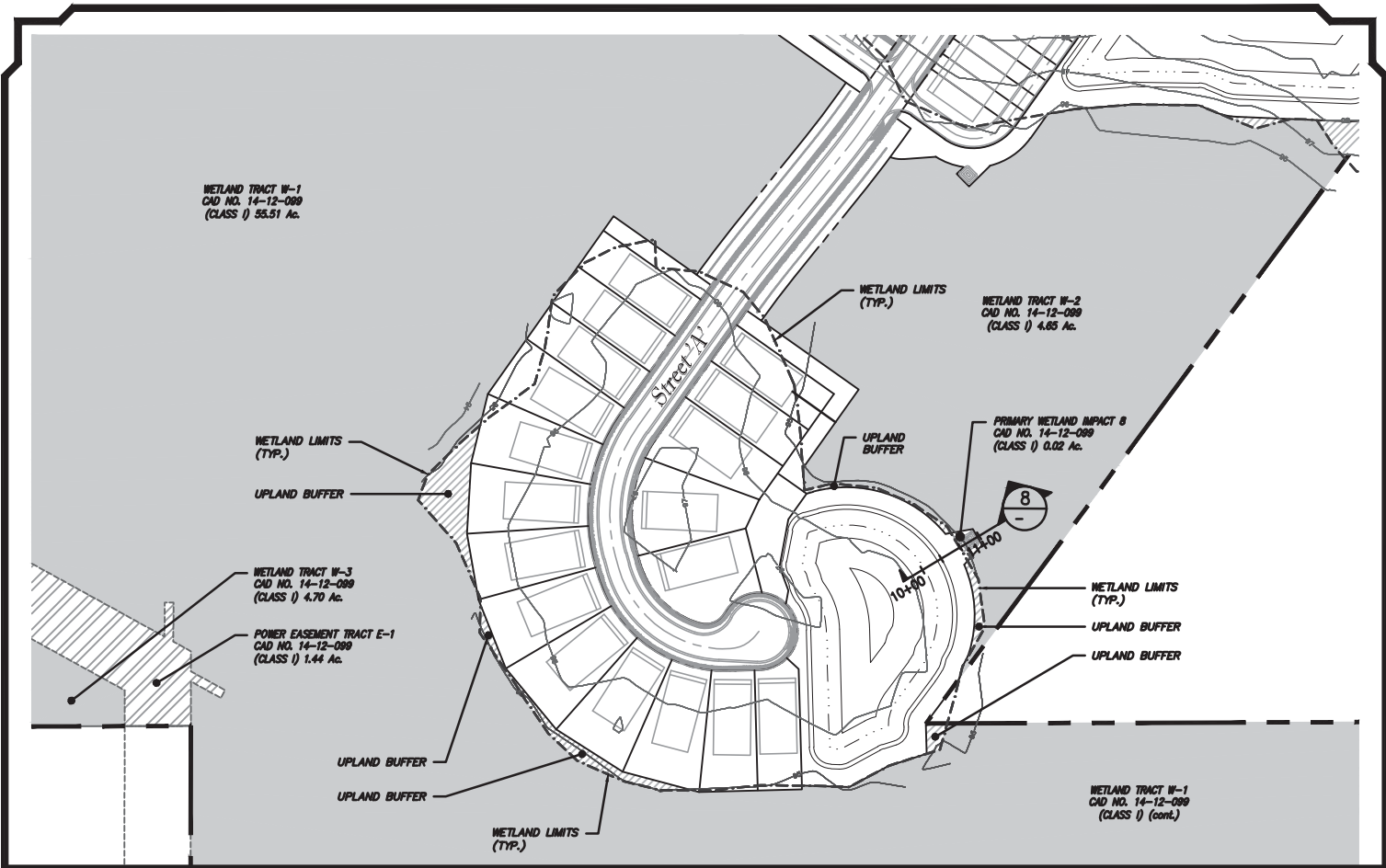
**Legado**

**POULOS & BENNETT**



SCALE IN FEET

Exhibit 7



CROSS SECTION 8  
(WETLAND IMPACT 8)

Wetland Impact 8 Exhibit

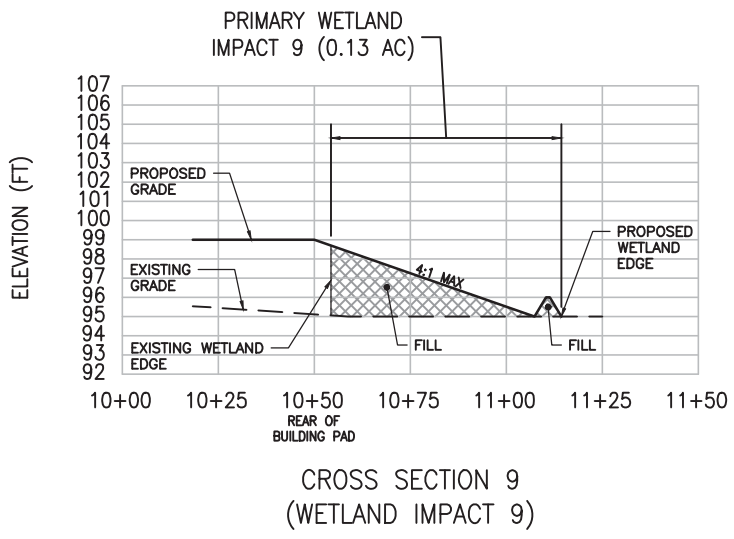
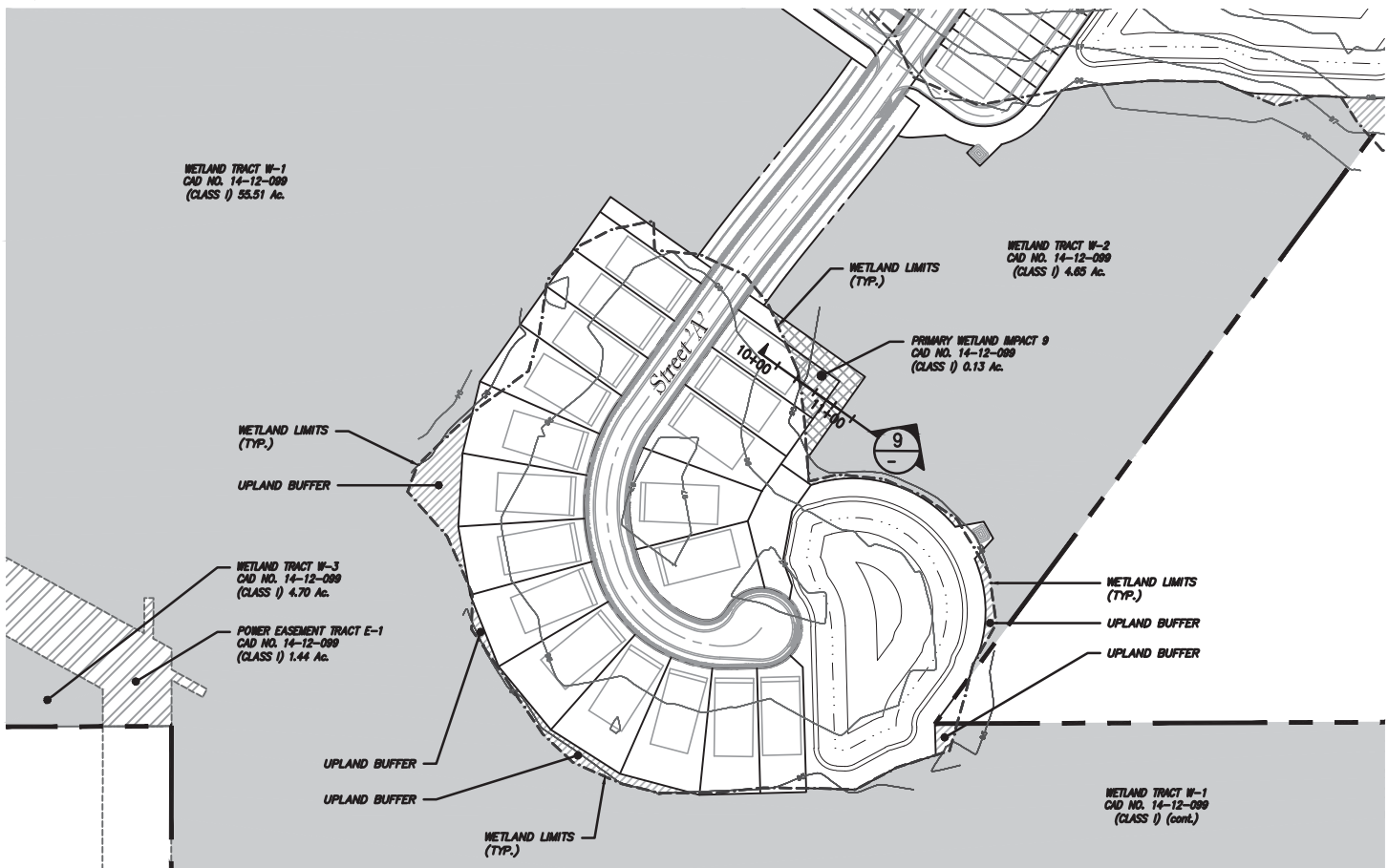
**Legado**

**POULOS & BENNETT**



SCALE IN FEET

Exhibit 8



Wetland Impact 9 Exhibit

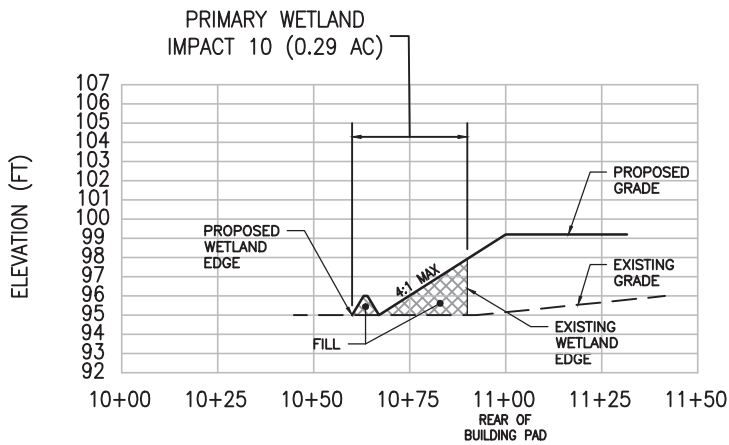
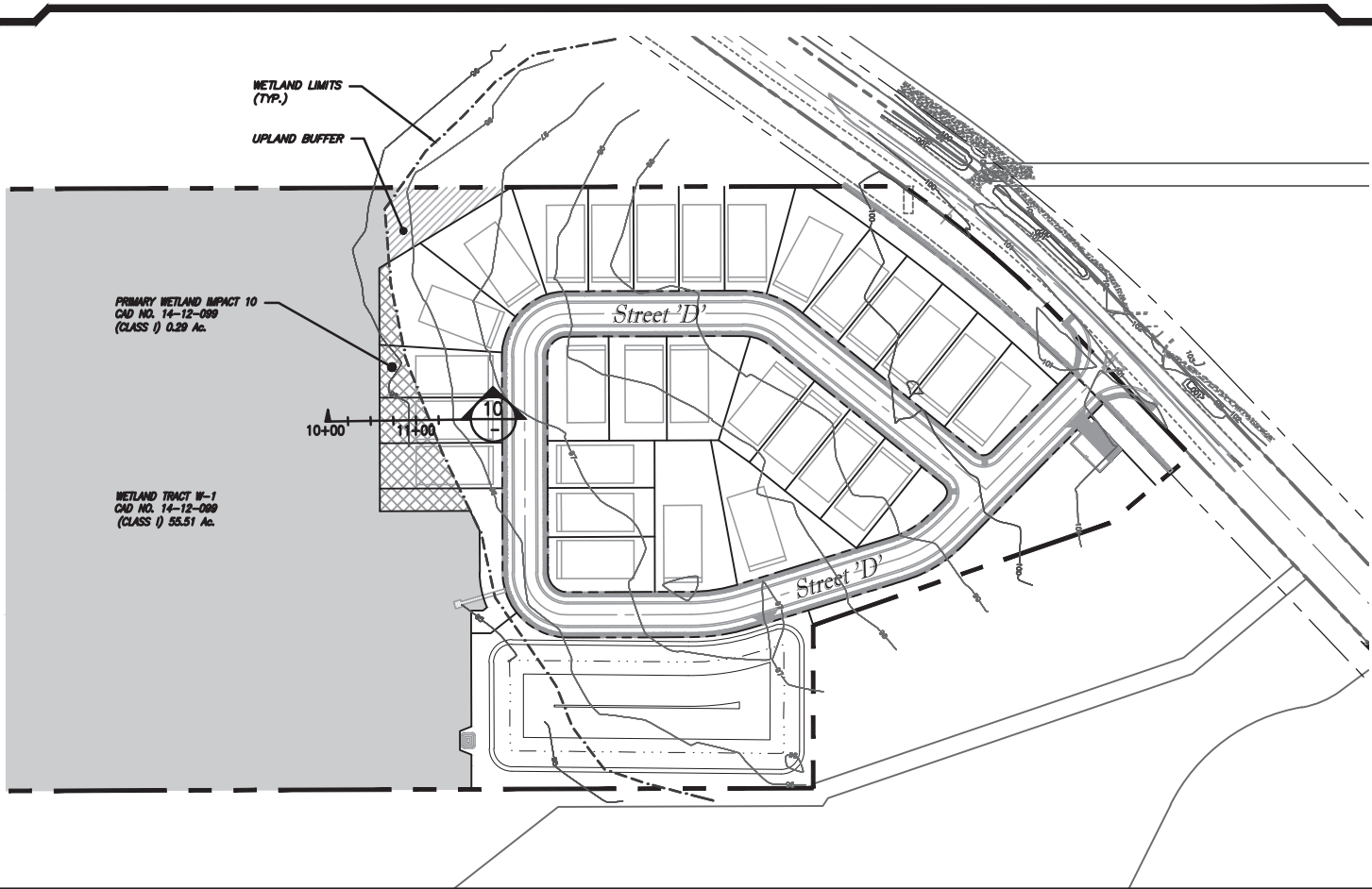
**Legado**

**POULOS & BENNETT**



SCALE IN FEET

**Exhibit 9**

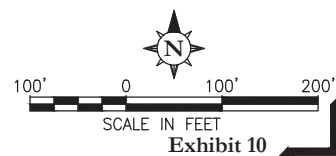


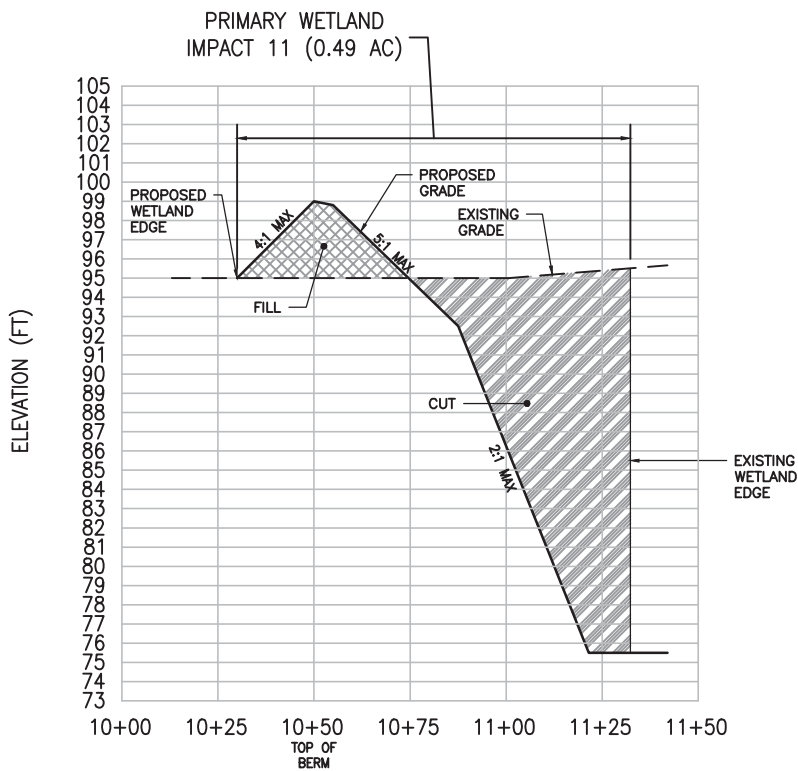
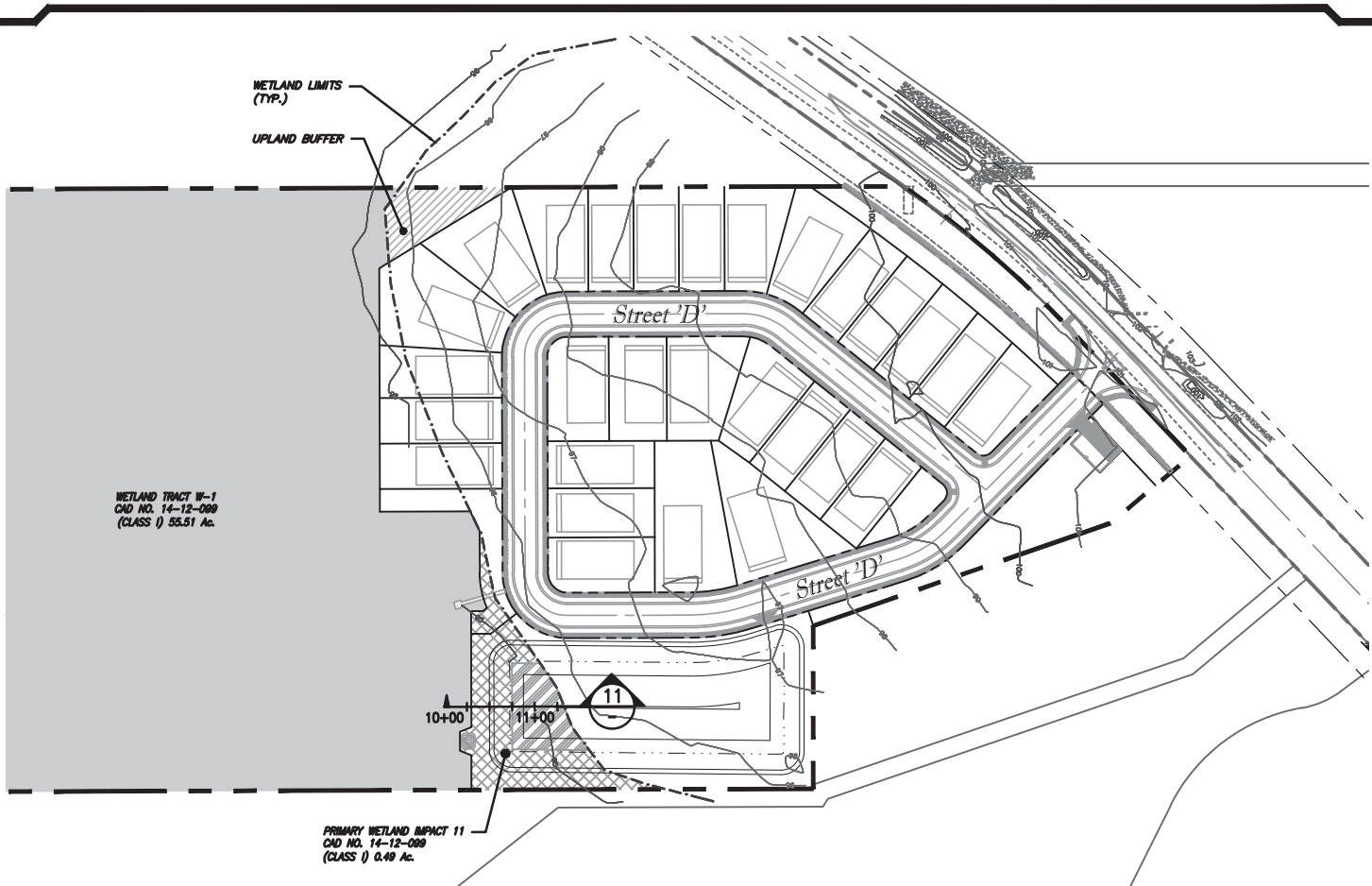
CROSS SECTION 10  
(WETLAND IMPACT 10)

Wetland Impact 10 Exhibit

**Legado**

**POULOS & BENNETT**





CROSS SECTION 11  
(WETLAND IMPACT 11)

Wetland Impact 11 Exhibit

**Legado**

**POULOS & BENNETT**

